

IWH History

The Halle Institute for Economic Research (IWH) – Member of the Leibniz Association was founded in 1992. Its foundation was effected by an agreement between the German Federal Government and the federal state of Saxony-Anhalt to jointly fund an institute for empirical economic research. IWH is a member of the Leibniz Association and belongs to section B “Economics, Social Sciences and Spatial Research”.

IWH’s founding mission was to carry out research on the economic transition in East Germany and Central and Eastern Europe. Transition comes along with institutional changes and processes of adaption and offers both a rich source of economic questions and the possibility – when considered a “natural experiment” – to apply modern scientific methods. Anyhow the transformation of the formal institutions has been completed.



IWH has therefore extended its research profile and focuses on processes of economic convergence and the role of the financial system regarding the (re-)allocation of production factors as well as the facilitation of productivity and innovation.

Former presidents

- ↗ Dr Manfred Wegner (1992–1993)
- ↗ Professor Dr Dr h. c. Rüdiger Pohl (1994–2004)
- ↗ Professor Dr Dr h. c. Ulrich Blum (2004–2011)
- ↗ Professor Dr Claudia M. Buch (2013–2014)



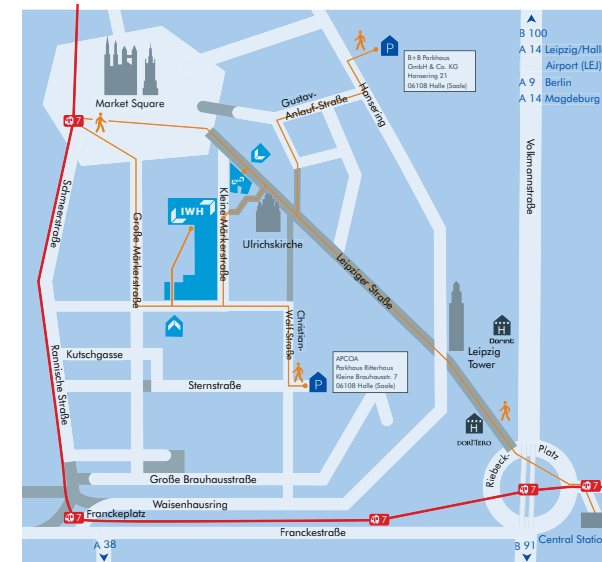
Halle Institute for Economic Research
Member of the Leibniz Association

Kleine Maerkerstrasse 8
D-06108 Halle (Saale), Germany
Tel +49 345 7753 60
Fax +49 345 7753 820
E-mail: presse@iwh-halle.de
www.iwh-halle.de

Last update: November 2020
Photos: IWH, (c) Christian Hüller, Fotowerk BF, freistil Fotostudios
Graphics: Heimrich & Hannot, IWH

How to reach us:

From Leipzig/Halle airport (LEJ) trains offer the quickest link to Halle (Saale) central station with a journey time of 15 minutes. From Halle (Saale) central station, you reach IWH with either tram line 7 (direction Kröllwitz) at stop marketplace (Marktplatz) or by foot through the pedestrian area Leipziger Straße (about 15 minutes).



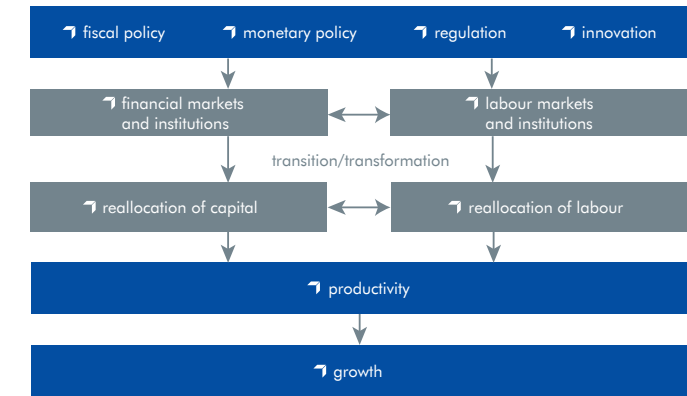
Halle Institute for Economic Research
Member of the Leibniz Association

IWH and its Tasks

From Transition to European Integration



IWH Research Strategy Nexus



At a Glance

IWH’s tasks are economic research and research-based advising of economic policy. IWH conducts evidence-based research by combining theoretical and empirical methods. In the focus of its research, IWH investigates processes of economic convergence, the role of the financial system regarding the (re-)allocation of production factors as well as the facilitation of productivity and innovation.

IWH research topics are structured in four research clusters:

- ↗ **Macroeconomic Dynamics and Stability:** What are the causes and consequences of macroeconomic fluctuations and instabilities; how can these be empirically identified?
- ↗ **Institutions and Social Norms:** How do different institutional settings and their changes influence resource (re-)allocation, in particular of human and real capital?
- ↗ **Productivity and Innovation:** What are the consequences of resource misallocation at the firm level? What are the adjustment costs of firm exit on workers?
- ↗ **Financial Stability and Regulation:** What are the effects of financial crises on the real economy? How does the structure and regulation of the financial system affect the allocation of resources within economies and internationally?

Executive Board

Scientific Management

➤ Professor Reint E. Gropp, PhD
President



➤ Professor Dr Oliver Holtemöller
Vice President



➤ Professor Michael Koetter, PhD
Vice President



Administrative Management

➤ Dr Tankred Schuhmann
Head of Administration



Organisational Structure

IWH research is organised in a matrix structure. The primary dimension of the matrix consists of research departments that have been established on a medium to long-term basis and which are responsible for human resources development, infrastructure development and quality management. The four departments are

- Financial Markets
- Macroeconomics
- Structural Change and Productivity
- Laws, Regulations and Factor Markets

The secondary dimension of the matrix consists of research groups organised as fixed-term projects. They are responsible

for working on specific research projects. Topic-oriented research clusters, which are located where the two dimensions interface, do not form their own organisational units. The establishment of research groups follows a structured, competitive procedure. The research clusters and research groups comprise researchers from different departments, thus allowing for a cross-departmental integration of research at IWH. Currently, there are four research clusters:

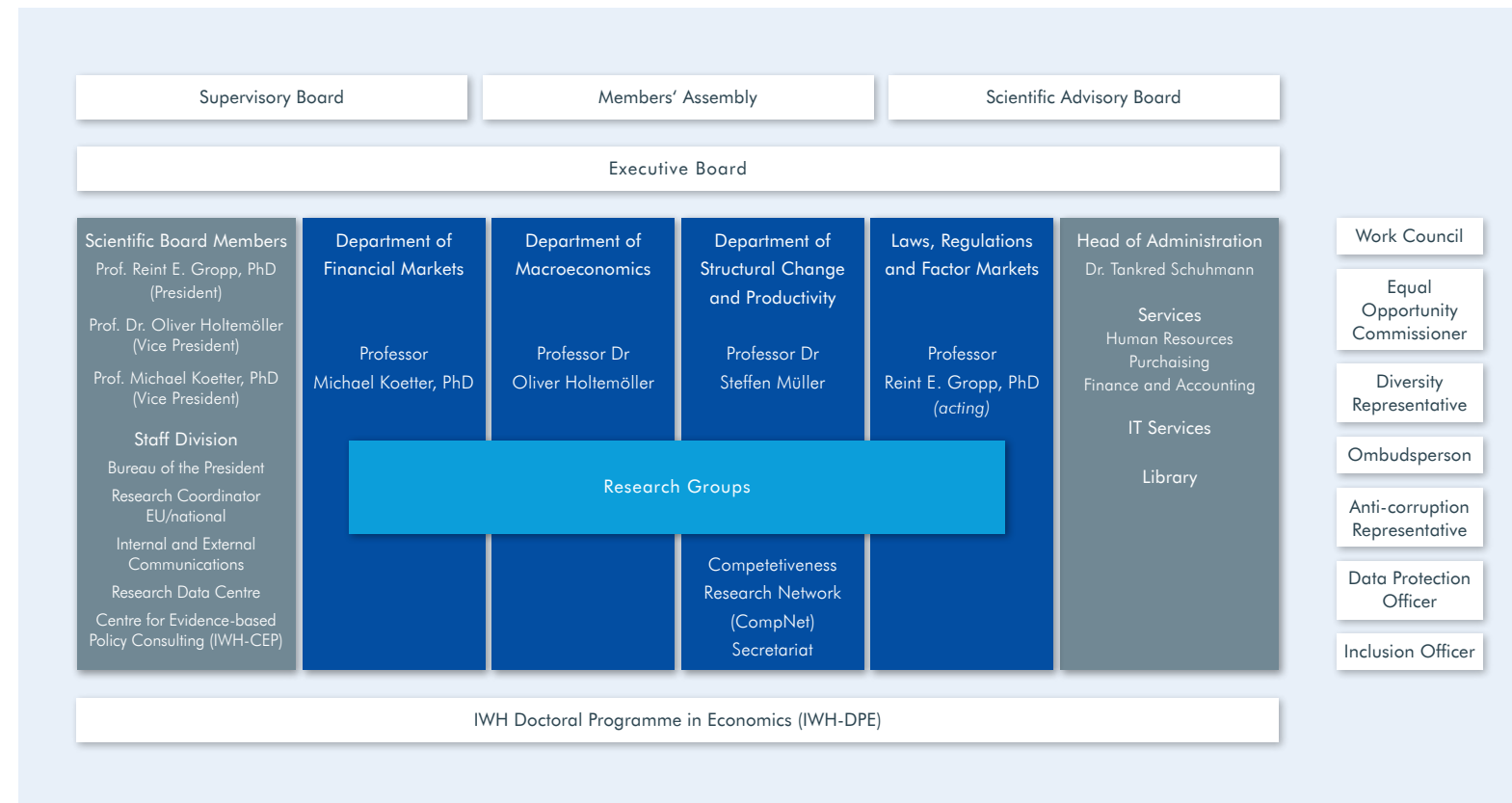
- Macroeconomic Dynamics and Stability
- Institutions and Social Norms
- Productivity and Innovation
- Financial Stability and Regulation

IWH Doctoral Programme in Economics (IWH-DPE)



The IWH Doctoral Programme in Economics (IWH-DPE) constitutes the organisational framework for postgraduate education at IWH. Doctoral students take mandatory Frontiers Courses, optional required Special Courses, regularly present and advocate their research in the Doctoral Research Seminar and get support by their internal supervisors. IWH-DPE cooperates with the Central-German Doctoral Program Economics (CGDE).

www.dpe-halle.de



Centre for Evidence-based Policy Advice (IWH-CEP)

The Centre for Evidence-based Policy Advice is a best-practice platform for evidence-based economic policy. Here, activities in research, teaching, and policy consulting are bundled to create better foundations for a causal analysis of economic policy instruments in Germany. This is done by workshops, consulting projects, pilot studies and the provision of data about economic policy instruments for researchers. IWH-CEP cooperates with Martin Luther University Halle-Wittenberg as well as with Otto von Guericke University Magdeburg.

